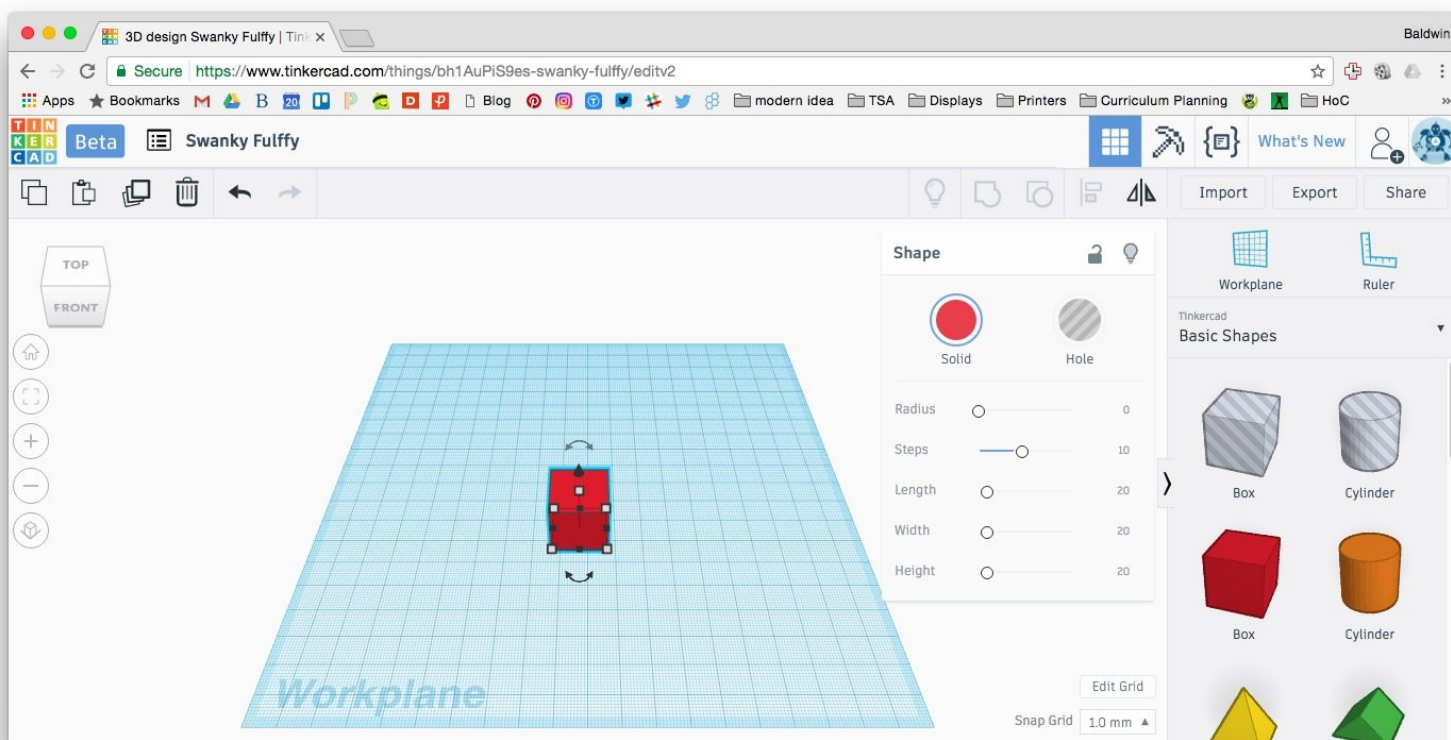


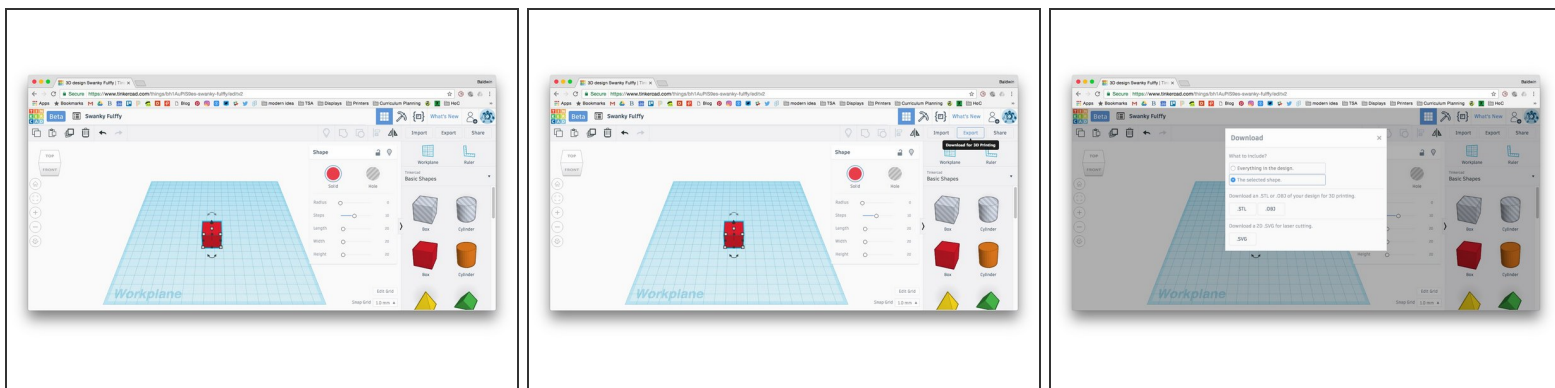
# baldwindream

## Printing from Tinkercad

Written By: Mr. Barnes

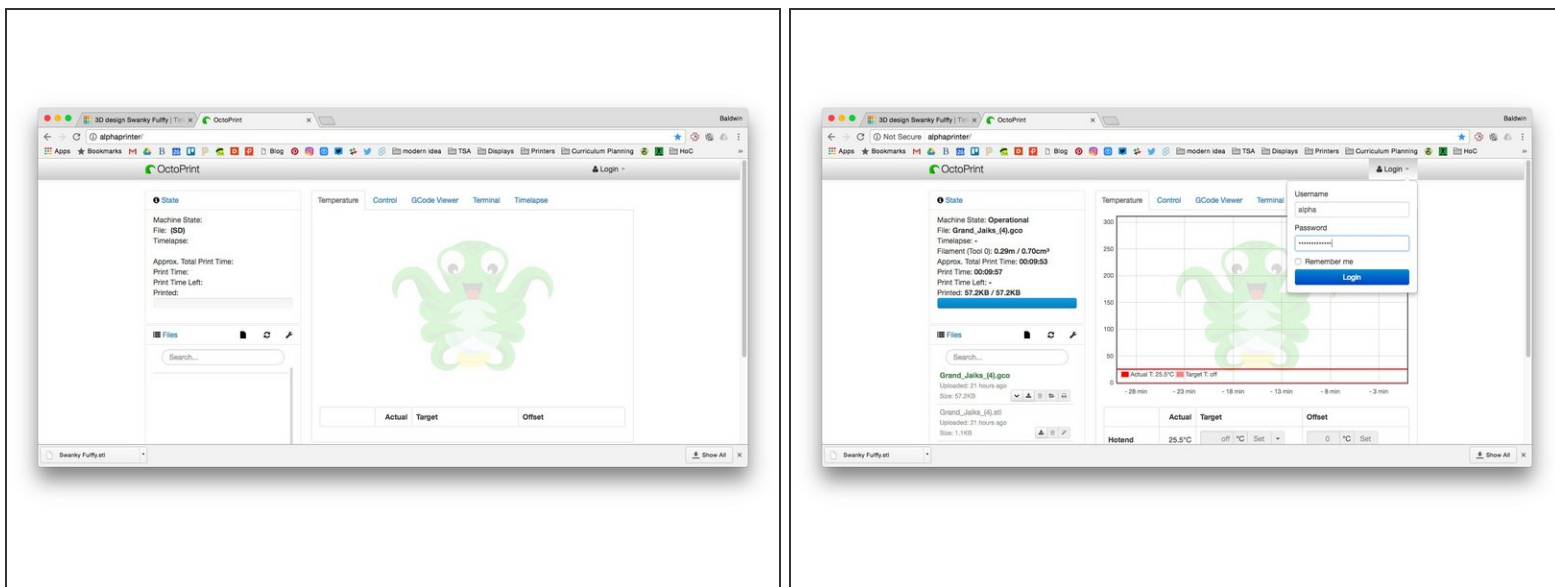


## Step 1 — Export STL Model from Tinkercad



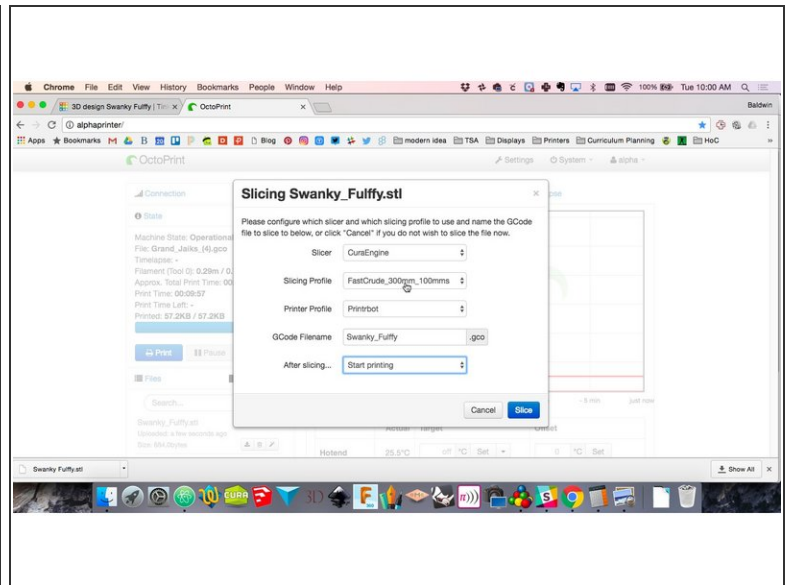
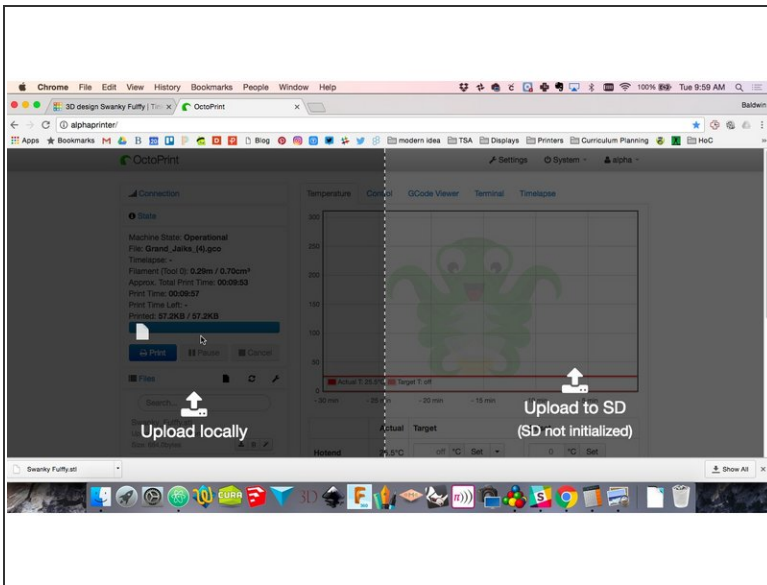
- Hit 'Export' in the top right.
- In the pop up, select the desired objects and click the STL button.

## Step 2 — Browse to the printer interface



- Each printer has a web interface that you can access and send parts to the printer. We do all of this from the web browser.
- In the address bar, type in either alphaprinter/ or betaprinter/
- Login using either alpha or beta for the username on each printer. Password is thinkinggirls

## Step 3 — Drag STL File into Printer Interface



- Simply drag and drop your STL file onto the printer's web interface. Make sure to drop it in the left side of the page. No the SD card side.
- Once the STL uploads, there will be a pop up.
- Set the slicing profile for FastCrude... and set the 'After Slicing' to Start Printing.
- Hit the blue 'Slice' button and you are set!